

# J N C R O W N



*Where Luxury Wears  
the Crown*



*Where Luxury Wears the Crown*

PRODUCT DEVELOPED BY MICHELLE DESIGNING &  
CONSTRUCTION

## Contacts

Near Government Hospital, Bus stand Road,  
Jalore, Rajasthan

For Booking, Contact:  
+91 9783594347 / +91 7411164185

[www.jncrownplazza@gmail.com](mailto:www.jncrownplazza@gmail.com)



# A NEW LANDMARK OF LUXURY

Step into a space where elegance, innovation, and premium experiences come together.

Discover curated brands, refined dining, and a lifestyle beyond the ordinary.



# LUXURY IN EVERY DETAIL

Every corner is designed to deliver excellence.

Experience modern amenities that combine style, comfort, and functionality.



## PREMIUM SHOPPING DESTINATION

Multiple National & International Brands



## HIGH-END INTERIOR FINISHES

Crafted with precision. Finished with finesse.



## SERVICE BEYOND EXPECTATIONS

Elevated customer services with concierge support



## GOURMET DESTINATIONS

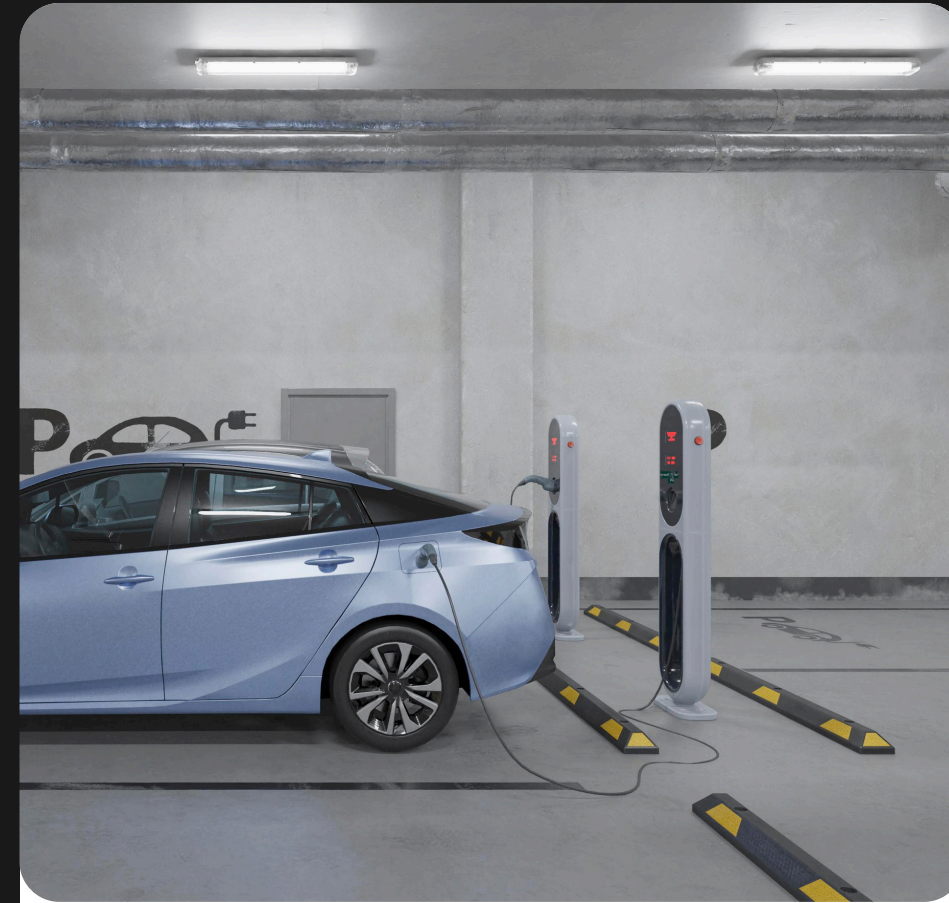
Premium dining experiences and fine-dine restaurants





## HOTEL ROOMS- AC/NON-AC

Comfort tailored to every stay.



## BASEMENT PARKING WITH ELECTRIC CHARGING

Secure parking. Seamless convenience.



## PVR CINEMA

Blockbusters, elevated



## SOLAR ELECTRICITY & FIRE SYSTEM

Powered by the sun. Committed to sustainability & Safety engineered into every space.



# GRAND ARRIVAL WITH ICONIC IDENTITY

An entrance that defines distinction.



# OTHER CURATED EXPERIENCES



CCTV Camera



Separate Toilet



24Hr. Water



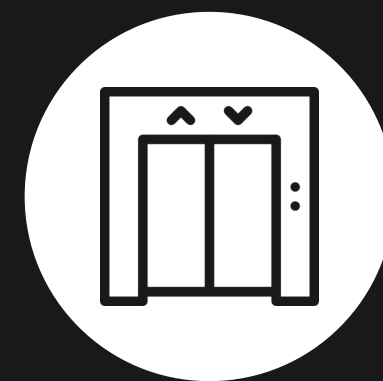
Senior Citizen  
Seating



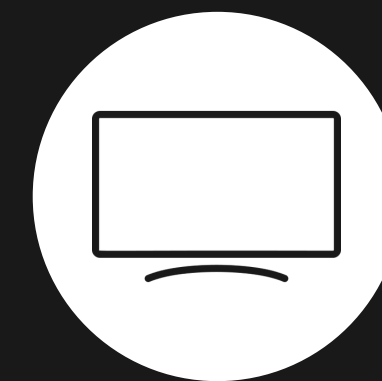
Lush Green  
Garden



1 car Allotted  
Parking



2 Stretcher  
Speed Lift



Screening



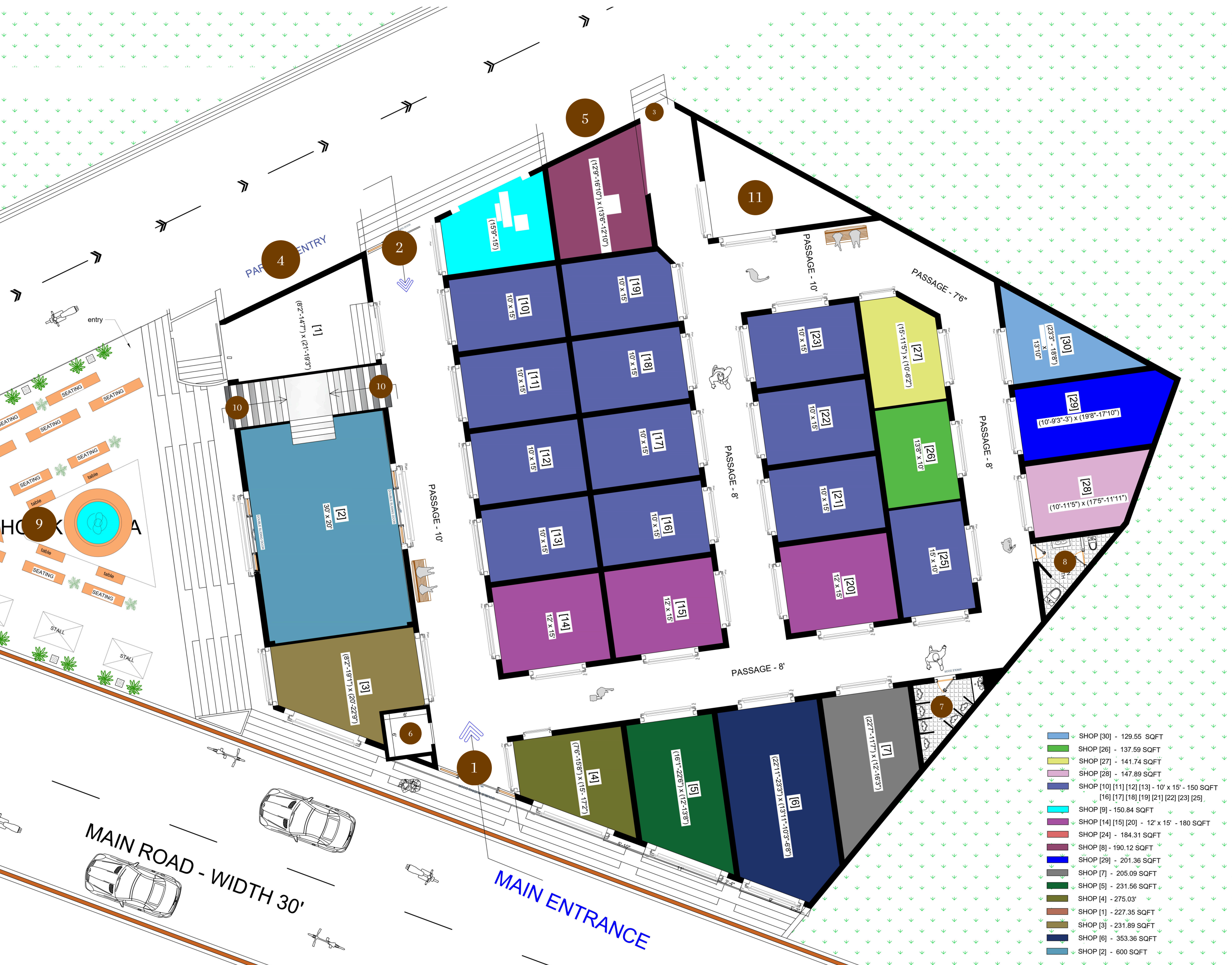
# SPECIFICATION

- Flooring : 800x1600mm Gvt tiles
- Switches : GM/Goldmedal/Vinay/Kundan
- Doors : Glass Door (Openable Glass Door - 12mm Thickness Glass With Toughened glass)
- Steel - Reinforcement Bars : Kamdhenu/JindalRegular/Rathi Tor/Mangla.
- Cement : Ultratech / Ambuja - Masonary & Plaster Work
- Plumbing : Prince/Appollo/ Aashirwad/ Finolex
- Sutter : Jack Lift System (Rotate Handle Sutter)
- Inner Stair Steps/ Door Dasa etc. : Artificial Stone



Note : Developer resources the right to make changes in design, plans, specification, amenities, elevation etc. without prior notice. Such changes would be bindings on all the buyers/member. color and design/pattern of tiles and features may change subject to availability.

# GROUND FLOOR PLAN



## LEGENDS

1. Main Entrance
2. Back Main Entrance
3. Back Entrance
4. Parking Entry
5. Parking Exit
6. Lift
7. Male Toilet
8. Female Toilet
9. Main Garden Area
10. Staircase
11. Office

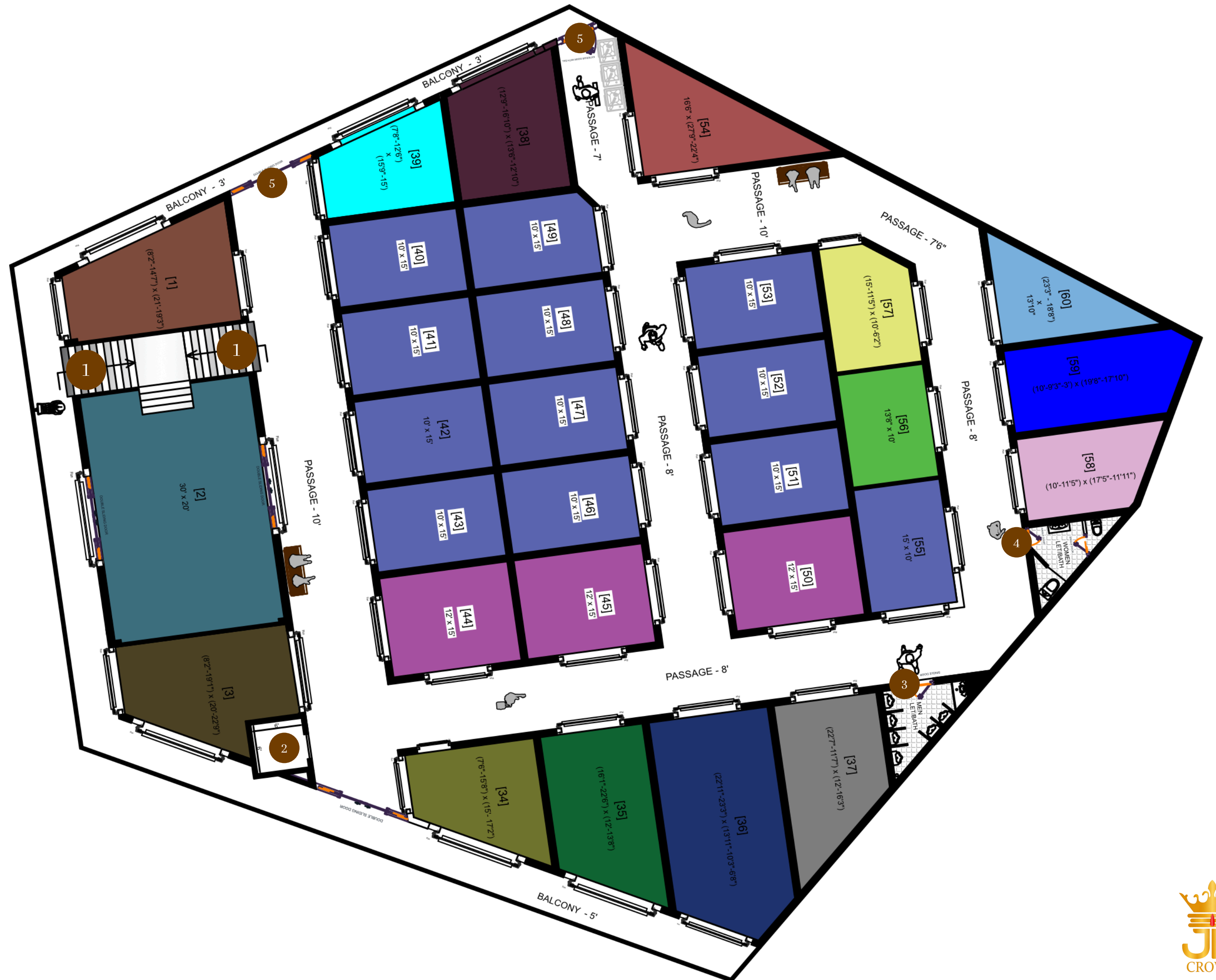
SHOP [30]	- 129.55 SQFT
SHOP [26]	- 137.59 SQFT
SHOP [27]	- 141.74 SQFT
SHOP [28]	- 147.89 SQFT
SHOP [10] [11] [12] [13] - 10' x 15'	- 150 SQFT
[16] [17] [18] [19] [21] [22] [23] [25]	
SHOP [9]	- 150.84 SQFT
SHOP [14] [15] [20]	- 12' x 15' - 180 SQFT
SHOP [24]	- 184.31 SQFT
SHOP [8]	- 190.12 SQFT
SHOP [29]	- 201.36 SQFT
SHOP [7]	- 205.09 SQFT
SHOP [5]	- 231.56 SQFT
SHOP [4]	- 275.03'
SHOP [1]	- 227.35 SQFT
SHOP [3]	- 231.89 SQFT
SHOP [6]	- 353.36 SQFT
SHOP [2]	- 600 SQFT



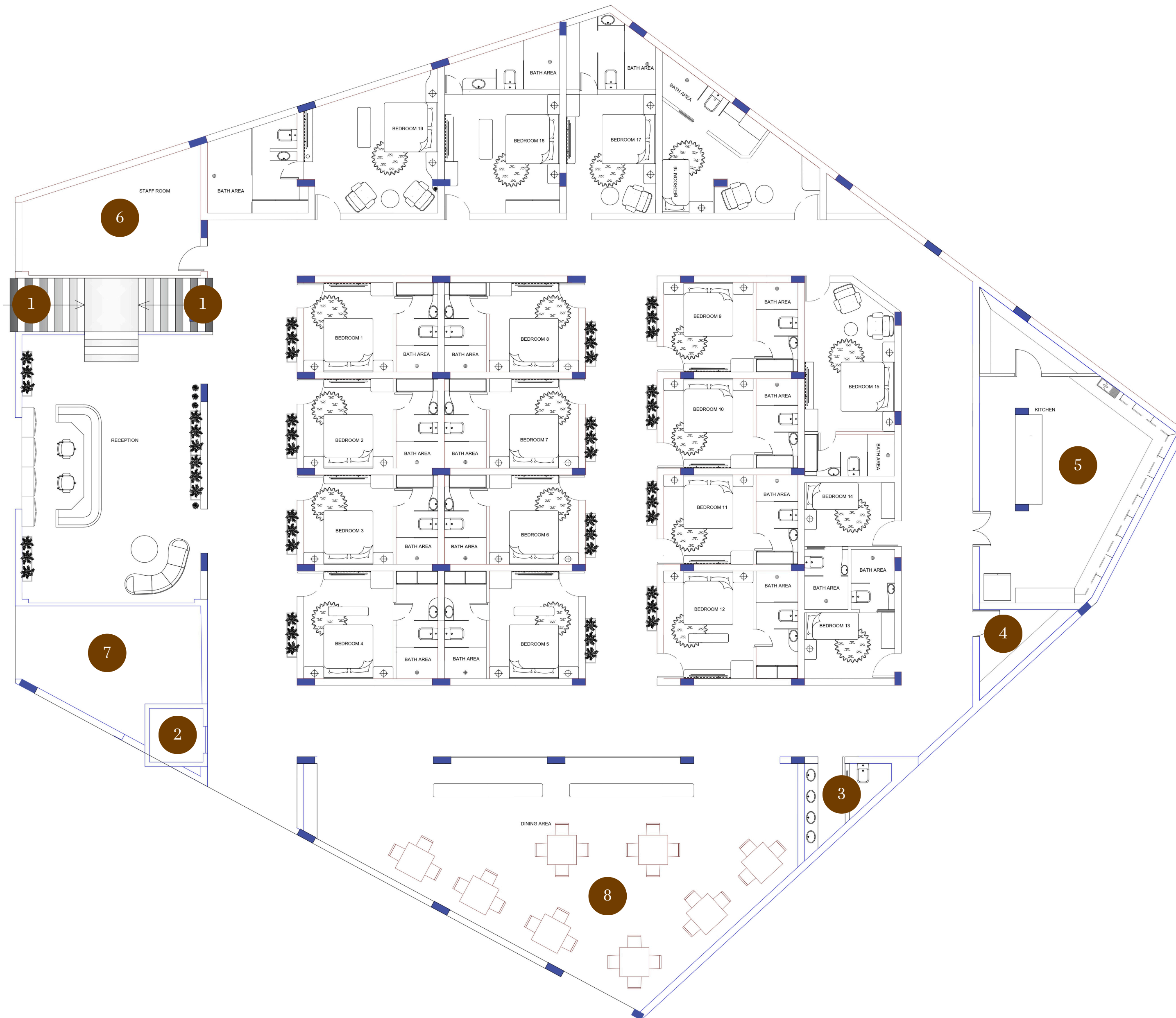
# FIRST FLOOR PLAN

## LEGENDS

- 1. Staircase
- 2. Lift
- 3. Male Toilet
- 4. Female Toilet
- 5. Balcony Entrance



# HOTEL/THIRED FLOOR PLAN



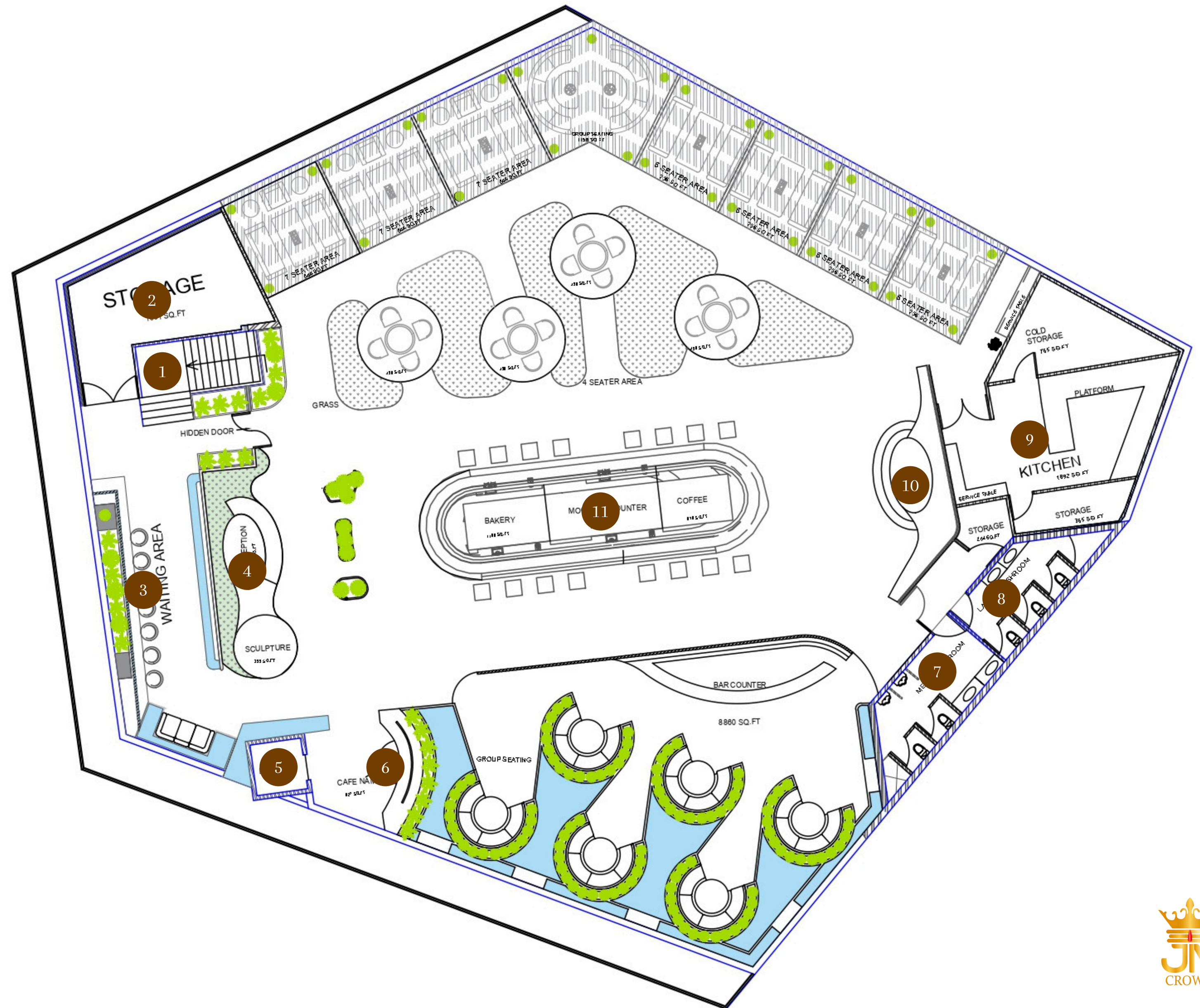
## LEGENDS

1. Staircase
2. Lift
3. Male Toilet
4. Female Toilet
5. Kitchen
6. Staff Room
7. Storage Room
8. Dinning Area

# ROOFTOP CAFE PLAN

## LEGENDS

1. Staircase
2. Storage
3. Waiting Area
4. Reception Area
5. Lift
6. Selfie Point
7. Male Toilet
8. Female Toilet
9. Kitchen
10. Stage
11. Moktail Counter





# ICONIC ARCHITECTURE

A bold expression of modern design  
and timeless elegance.

The striking façade creates a  
landmark that defines luxury and  
innovation.





# LUXURY RETAIL EXPERIENCE

Discover a curated collection of global and premium brands.

A destination where fashion, lifestyle, and sophistication come together.

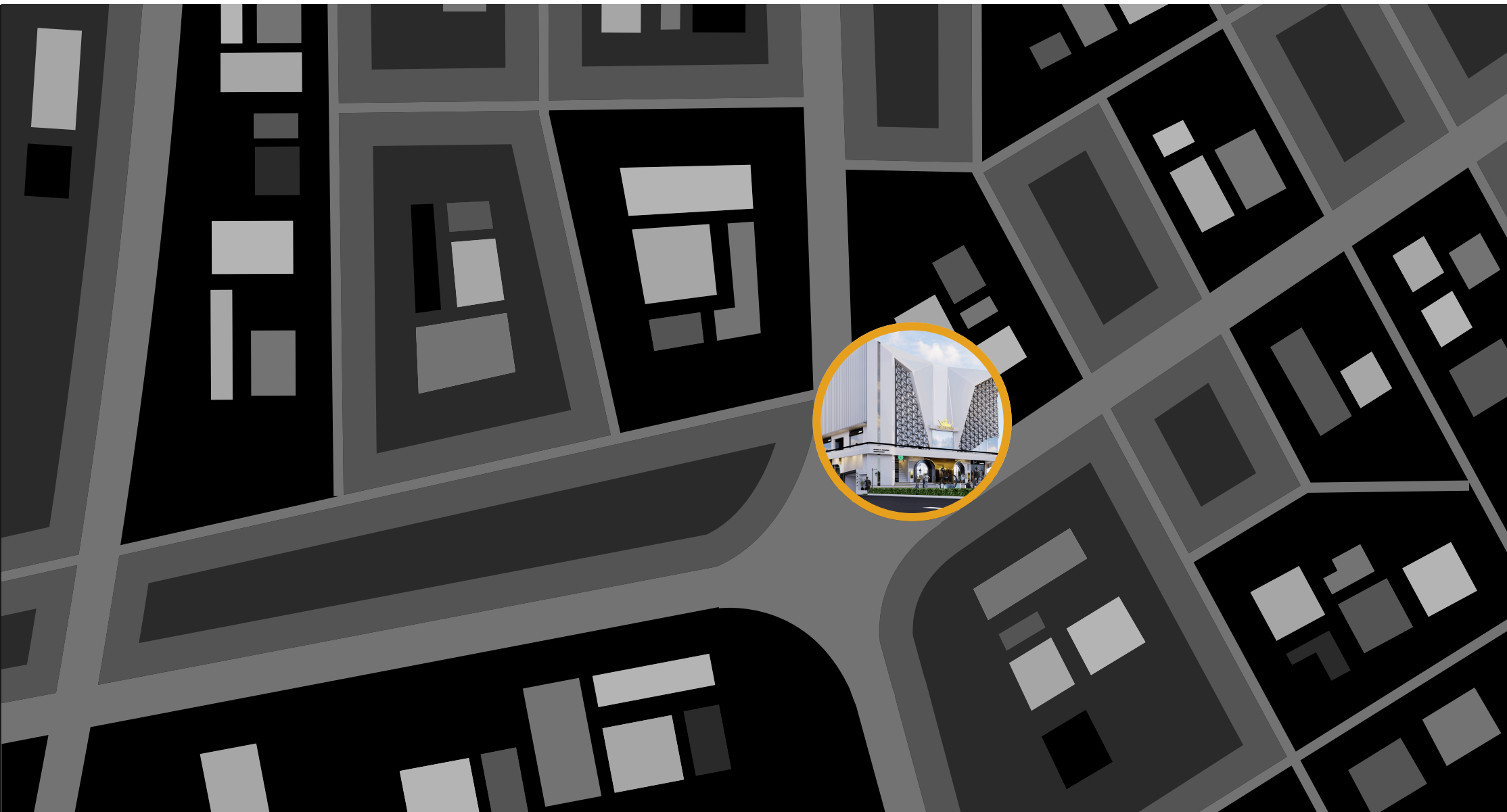
Fine Dining





# PRESTIGIOUS ADDRESS

An address that reflects status, accessibility, and strategic importance.  
Seamlessly connected to the city's most vibrant destinations.



## EVERYTHING WITHIN REACH

- Railway station 1.3km
- Government Hospital 30m
- Government Bus Stop 1.2km
- Police Station 1.4kDistrictm
- Shri Sire Mandir 6.1km
- Shree Ram Hospital 1.3km
- Main Market 800m
- Haridev Joshi Circle 450m
- District Court 1.1km
- SBI ATM 50m

